



**Andy Warhol**  
Ladies and gentlemen, 1975  
Offset lithograph on paper  
104 x 74.5 cm.  
41 x 29.33 in.



**Andy Warhol**  
(Bodley Gallery Announcement)Studies for a Boy  
Book, 1956  
Offset lithograph on paper  
PM19. 0238  
40.3 x 34.3 cm.  
15 7/8 x 13 1/2 in.



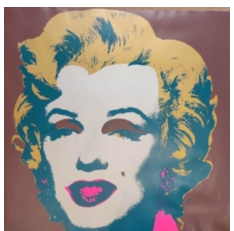
**Andy Warhol**  
À la recherche du shoe perdu, 1955  
Offset lithograph on paper  
PM12. 0250  
49.8 X 32.7 cm.  
19 5/8 x 12 7/8 in.



**Andy Warhol**  
Mao , 1974  
Screenprint on wall paper  
100 x 68 cm.  
39.38 x 26.77 in.



**Andy Warhol**  
Flowers, 1970  
Screen print on paper  
91.4 x 91.4 cm.  
35.83 x 35.83 in.



**Andy Warhol**  
Marilyn 'Sunday B. Morning' 1970, 1970  
Color screen printing on paper  
84,5 x 84,5 cm  
33.07 x 33.07 in



**Andy Warhol**  
Kiku, 1984  
Screenprint on paper  
20 x 27 cm  
7.87 x 10.63 in



**Andy Warhol**  
Campbell's Soup Can  
33 x 15 x 13 cm  
12.99 x 5.91 x 5.12 in



**Andy Warhol**  
Saint Apollonia , 1984  
Screenprint on Essex offset kid finish paper  
Unique trial proof, with the image reversal (TP  
29/80–80/80) aside the edition of 250, 35 AP, 8  
PP  
Identification number A140.089  
88.9 x 58.4 cm.  
35 x 23 in.  
50/80



**Andy Warhol**  
Saint Apollonia , 1984  
Screenprint on Essex offset kid finish paper  
Unique trial proof, with the image reversal (TP  
29/80–80/80) aside the edition of 250, 35 AP, 8  
PP  
Identification number A143.089  
88.9 x 58.4 cm.  
35 x 23 in.  
73/80



**Franco Angeli**  
Natale di Roma, 1964  
Acrylic on Masonite board  
50 x 64 cm  
19.69 x 25.2 in



**Franco Angeli**  
Sabaudia, metà anni '80  
Oil on canvas  
100 x 80 cm.  
39.37 x 23.62 in.



**Franco Angeli**  
United States, 1968  
Mixed media on canvas with velatin  
80 x 100 cm  
31.5 x 39.37 in



**Mimmo Rotella**  
Senza Titolo, 1961 ca.  
Décollage on cardboard, posters, glue  
36 x 39 cm  
14.17 x 15.35 in



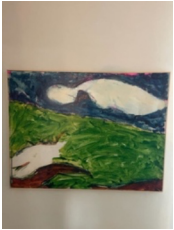
**Mario Schifano**  
Paesaggio Anemico, 1965  
Enamel, graphite and collage on paper  
70 x 100 cm  
27.56 x 39.37 in



**Mario Schifano**  
Senza Titolo, 1972  
Enamel, spray and pastel on canvas  
280 x 398 cm  
110.24 x 156.69 in



**Mario Schifano**  
Circeo, 1980  
Enamel on canvas  
80 x 100 cm  
31.5 x 39.37 in



**Mario Schifano**  
Senza Titolo, 1975  
Enamel on canvas  
60 x 80 cm  
23.62 x 31.5 in



**Mario Schifano**  
untitled, 1979-80  
Enamel and pastel on canvas  
70 x 100 cm.  
27.56 x 39.37 in.



**Endless**  
Palermo LizzyVuitton Silver, 2023  
Mixed media on canvas  
152 x 102 cm  
59.84 x 40.16 in  
(E401)



**ENDLESS**  
CALVIN CLASSIC'S ARCH, 2020  
Mixed media on canvas with a resin finish  
150 x 100 cm  
59 x 39.37 in  
(E127)



**Brainwash**  
1/2 Mickey Mouse Smile, 2020  
Mixed Media on paper  
56 x 76 cm  
22.05 x 29.92 in  
Unique

**Cris Contini Contemporary**

London | Milano | Bruxelles

w. [www.criscontinicontemporary.com](http://www.criscontinicontemporary.com) | e. [info@criscontinicontemporary.com](mailto:info@criscontinicontemporary.com)  
@criscontinicontemporary | #criscontinicontemporary



**Damien Hirst**  
Skull, 2009  
Acrylic and metallic paint on paper

71x51.5 cm  
27.95 x 20.28 in



**Robert Indiana**  
Poem Love –The Word, 1996  
Silkscreen print on paper  
55 x 66 cm  
21.7 x 26 in  
XXXIX/L



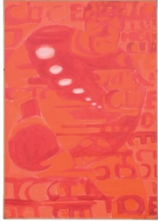
**Robert Indiana**  
Kvf vii –The Hartley Elegies: the Berlin Series, 1990  
/ 1991  
Screenprint in colours on Saunders Watercolour  
wove  
214 x 214 cm  
84 x 84 in  
48/50(AP 12)



**Robert Indiana**  
Kvf vi –The Hartley Elegies: the Berlin Series, 1990  
/ 1991  
Screenprint in colours on Saunders Watercolour  
wove  
214 x 214 cm  
84 x 84 in  
48/50(AP 12)



**Titina Maselli**  
Untitled, 1981  
Acrylic on canvas paper  
99 x 70 cm.  
39 x 27.56 in.



**Titina Maselli**  
Untitled, 1981  
Acrylic on canvas paper  
99 x 70 cm.  
39 x 27.56 in.



**Tano Festa**  
Sibilla Delfica, 1987  
Acrylic on emulsion-coated canvas  
100 x 70 cm.  
39.37 x 27.56 in.



**Tano Festa**  
Sibilla Cumana, 1987  
Acrylic on emulsion-coated canvas  
  
100 x 70 cm.  
39.37 x 27.56 in.